

HOW TO RUN A B105

The B105 batch job creates CLIS records for each marking period. In order for students to show up in the teacher grade books for the “new” term and reporting period the CLIS records must be created using the B105.

4 – Term Reporting Periods (Display P301 for your building set up – D P302)

Term	Reporting Period	
1	01	1 ST Nine Weeks
2	02	2 nd Nine Weeks
2	03	<i>Exam</i>
2	04	<i>Semester 1</i>
3	05	3 rd Nine Weeks
4	06	4 th Nine Weeks
4	07	<i>Exam</i>
4	08	<i>Semester 2</i>
4	09	<i>Final</i>

Step 1: Change the P115 Status(s)

Change the system code to “A” on lines 4, 6 and 7. Command: C P115

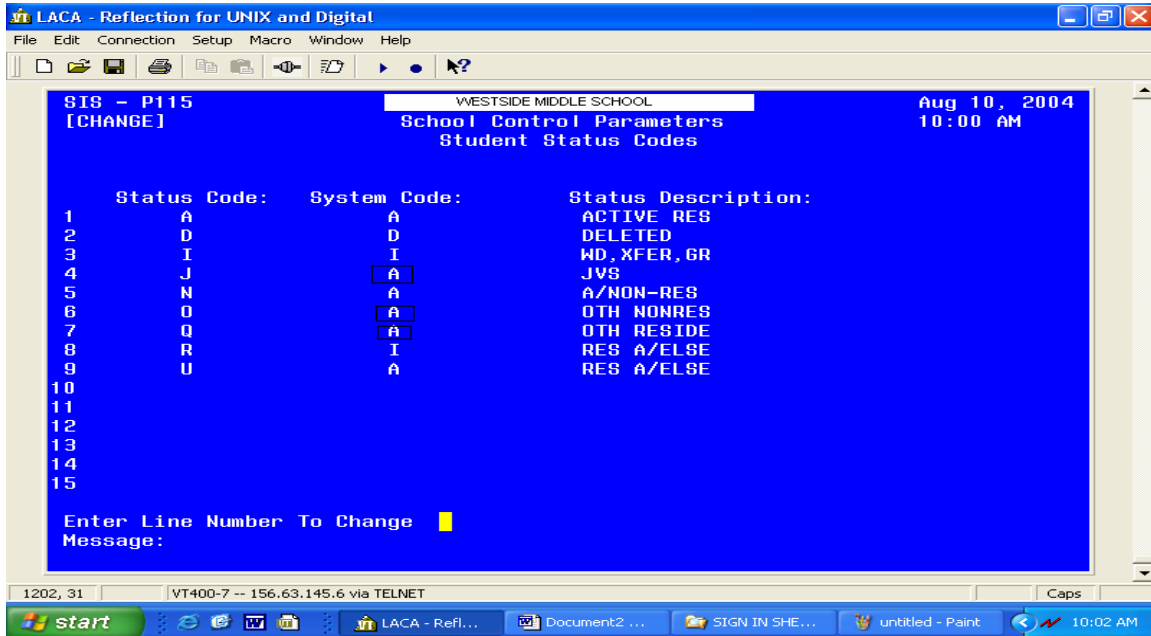
Example: This is what the P115 looks like normal: (Lines 4, 6 and 7 are “I” status)

```
LACA - Reflection for UNIX and Digital
File Edit Connection Setup Macro Window Help
[Icons]
SIS - P115
[DISPLAY]
WESTSID MIDDLE SCHOOL
School Control Parameters
Student Status Codes
Aug 10, 2004
10:00 AM

Status Code: System Code: Status Description:
1 A A ACTIVE RES
2 D D DELETED
3 I I WD, XFER, GR
4 J I JVS
5 N A A/NON-RES
6 O I OTH NONRES
7 Q I OTH RESIDE
8 R I RES A/ELSE
9 U A RES A/ELSE
10
11
12
13
14
15

Command: DISPLAY
Message:
```

- Change lines 4, 6 and 7 to "A" status. (Status J, O and Q)

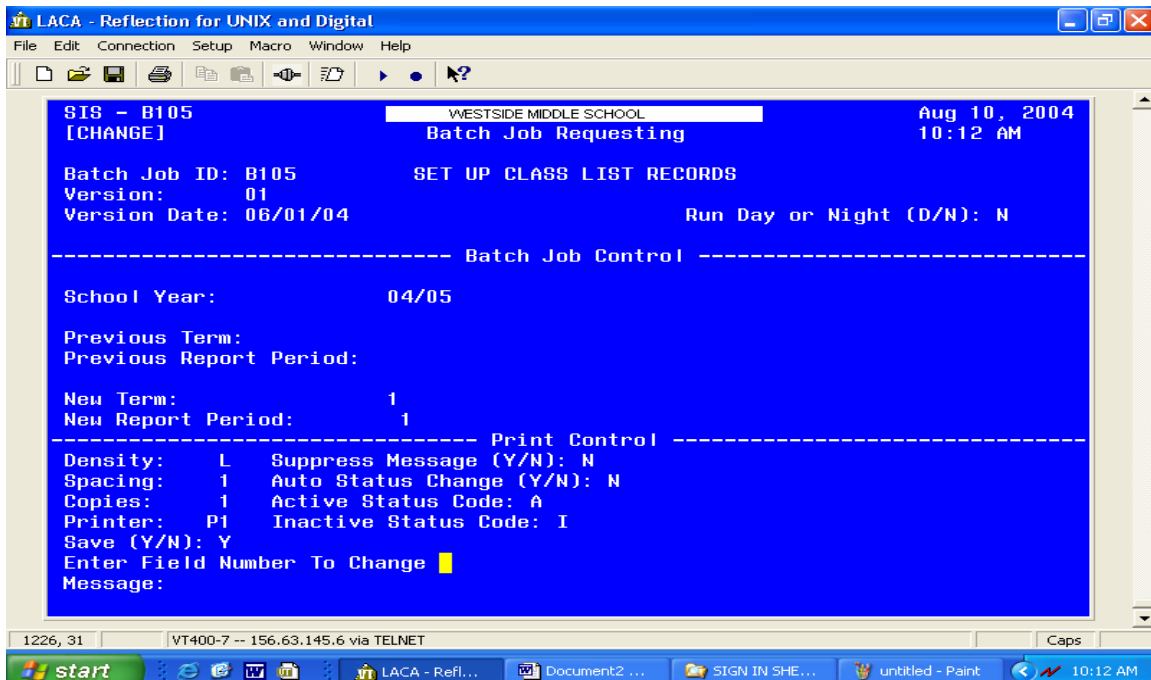


Step 2: Submit the B105

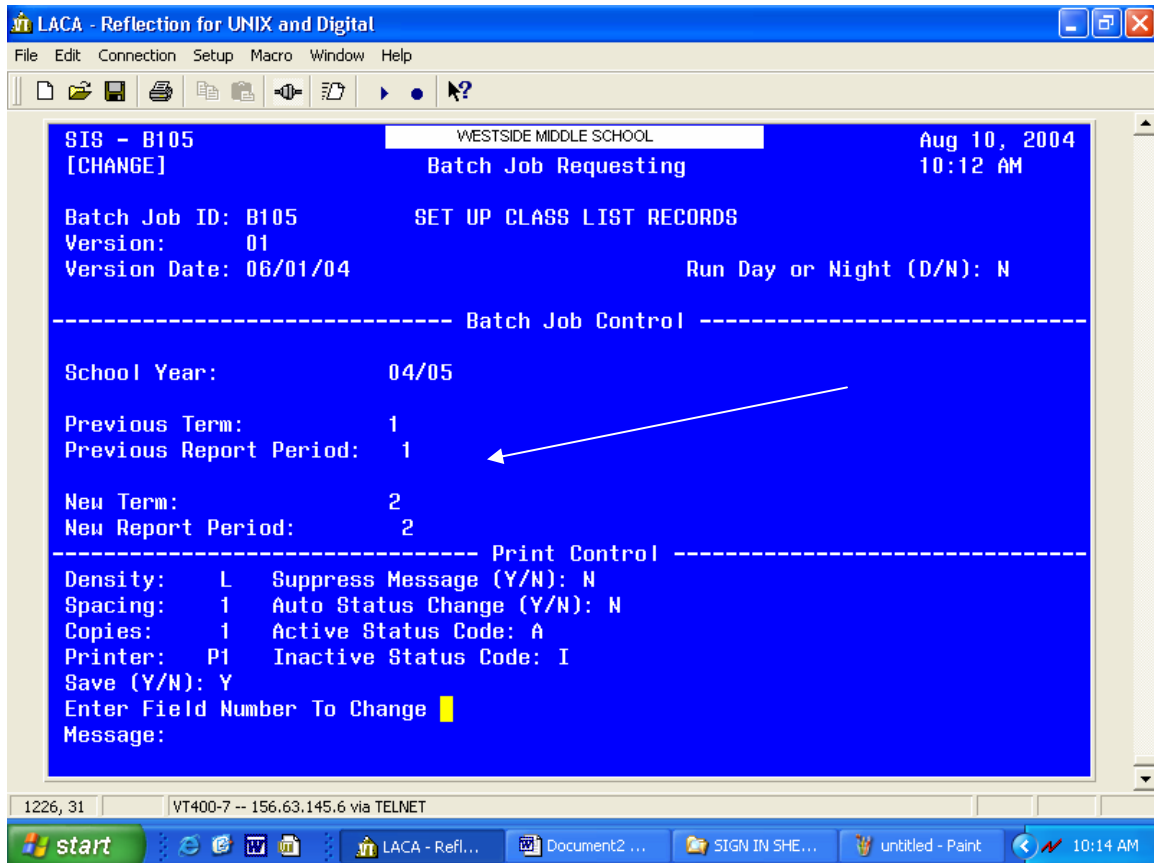
Make changes to the B105 screen every nine weeks. (If you are a 6 week then every 6 weeks.)

The Previous Term and Reporting Period should be the **“current Term and Reporting Period”**. The New Term and Reporting Period should be the **“next Term and Reporting Period”** you are going into.

Example: If you are at the end of the 1st Nine weeks, then this is what the B105 screen would look like: Command: C B105



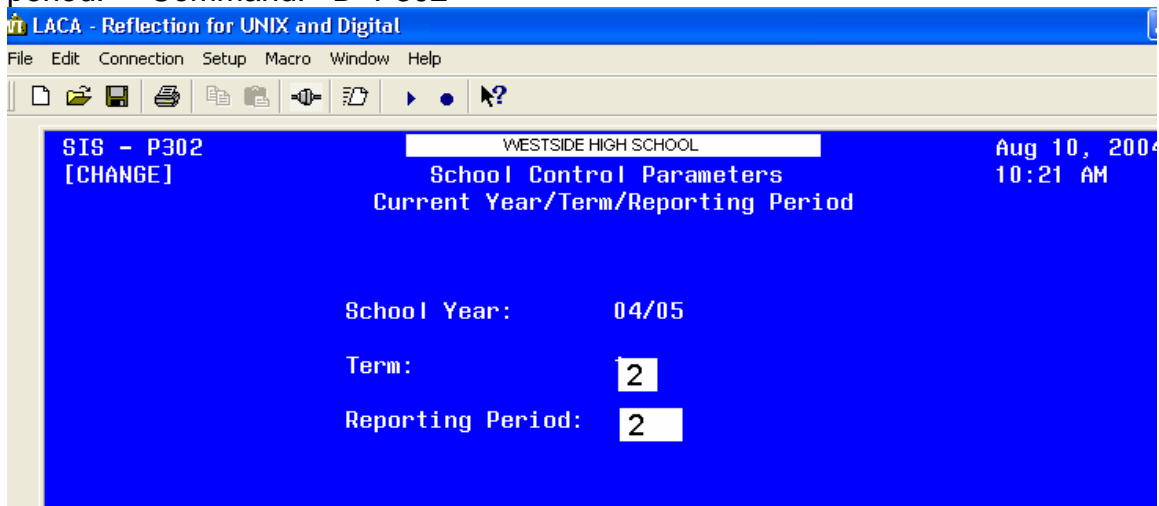
Change it to the following setup to move your building into the next nine weeks.



Step 3: Verify the B105 ran ok.

Check the MGMT screen to be sure that the B105 reads **“COMP”** (complete). Once it is complete check the P302 table to be sure you are in the “New Term and Reporting Period”.

Example: The P302 should look like this (with the next new term and reporting period. Command: D P302



Step 4: Set the P115 back to normal.

Change lines 4, 6 and 7 back to "I" status. Command: C P115

SIS - P115
[DISPLAY]

WESTSID MIDDLE SCHOOL
School Control Parameters
Student Status Codes

Aug 10, 2004
10:00 AM

	Status Code:	System Code:	Status Description:
1	A	A	ACTIVE RES
2	D	D	DELETED
3	I	I	WD, XFER, GR
4	J	I	JVS
5	N	A	A/NON-RES
6	O	I	OTH NONRES
7	Q	I	OTH RESIDE
8	R	I	RES A/ELSE
9	U	A	RES A/ELSE
10			
11			
12			
13			
14			
15			

Command: D ISPLAY
Message:

1202, 11 | VT400-7 -- 156.63.145.6 via TELNET | Document2 - Microsoft Word

start | LACA - Refl... | Document2 ... | SIGN IN SHE... | untitled - Paint | 10:00 AM