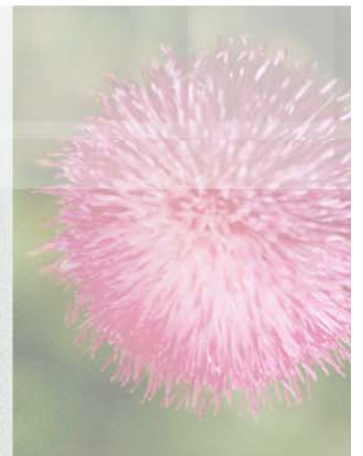




Special Education Directors Meeting

April 23, 2009



Agenda



- **SSEM Statistics/Facts**
- **February Follow Up**
 - **Forms Review**
 - **SSEM 6.0 Task Model Project Plan**
- **Training Dates for SpS 6.0**
- **SSEM 5.1.2 Hotfix Release**
- **ODE Clarifications**
- **Known Bug List**
- **Questions/Clarifications**
- **Next Meeting Date**



SSEM Statistics/Facts



- **309 Districts**
- **17 ITCs**
- **ADM of 519,758**

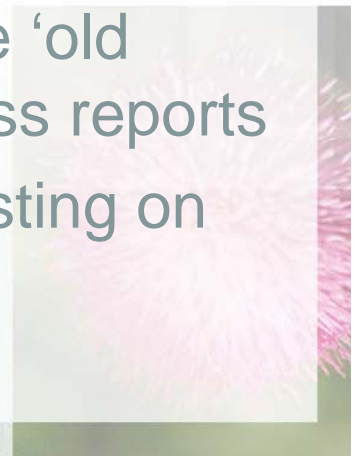
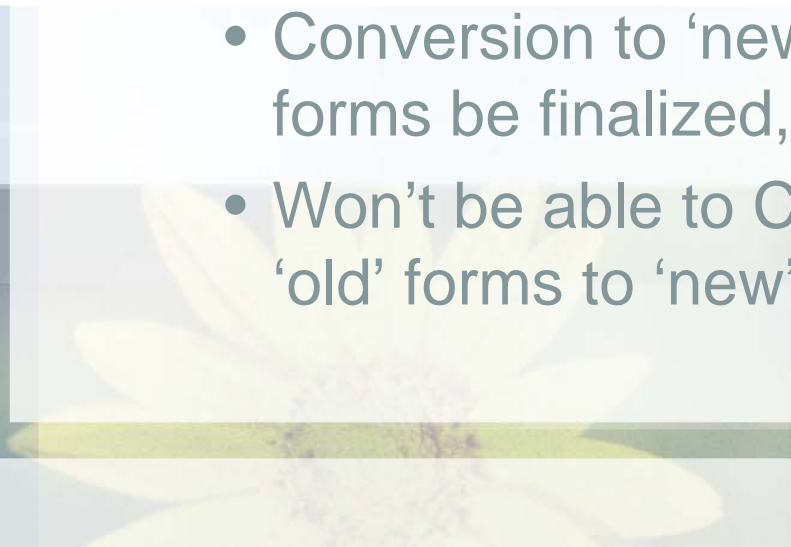


February Follow Up – New Forms



– Reference our current forms as ‘old’ forms and 2009-2010 forms as ‘new’ forms

- New forms must be in place for start of 09-10 school year
- New forms are reorganization of information, some new sections, removal of ‘old’ sections
- Conversion to ‘new’ forms require ‘old’ forms be finalized, except progress reports
- Won’t be able to Create from Existing on ‘old’ forms to ‘new’ forms.



February Follow Up – New Forms



– Supplemental Forms

- Most popular/requested forms will be released.
- Check to see what forms you need/want in the system. (May 4th Deadline)



February Follow Up – New Forms



– Progress Reports

- Any un-finalized Progress Reports will be rolled into one Open Progress Report Task
- Clarifying any potential changes with ODE



Training Dates for SpS 6.0



- **August 11, 2009 (Tuesday)**
 - 9am – 11am OR 1pm – 3pm
- **August 12, 2009 (Wednesday)**
 - 9am – 11am OR 1pm – 3pm
- **August 18, 2009 (Tuesday)**
 - 9am – 11am OR 1pm – 3pm
- **August 19, 2009 (Wednesday)**
 - 9am – 11am OR 1pm – 3pm
- **August 25, 2009 (Tuesday)**
 - 9am – 11am OR 1pm – 3pm
- **August 26, 2009 (Wednesday)**
 - 9am – 11am OR 1pm – 3pm



Task Model Project Plan



- **SpS 6.0 Task Model Project Plan**

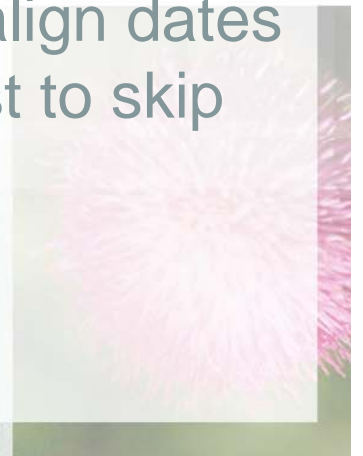
- Wave 1 – August 31, 2009
- Wave 2 – September 8, 2009
- Wave 3 – September 14, 2009
- Wave 4 – September 21, 2009



SSEM 5.1.2 Hotfix Release



- SSEM 5.1.2 – 4/8/2009
 - Test Date Year Calculation on EMIS Extract
 - October tests calculating as 200910, not 200810
 - Placeholder for Blank Services on EMIS DCF
 - If service dates missing, will not align dates with service on DCF but shrink list to skip blanks



ODE Clarifications



- **RIEP Event –‘IEEX’ Outcome ID**
 - Option will NOT be added to drop down list.
 - Valid option for EMIS; not appropriate for special education.
 - Student only exit special education through an ETR, not IEP.
- **TIEP Event – Event End Date**
 - Best Practice – use the IEP meeting date from sending school district.

From EMIS Manual - Chapter 2

When reporting a TIEP event, the adopted IEP has an End Date, and that End Date is the date that has been accepted and the date that should be reported.

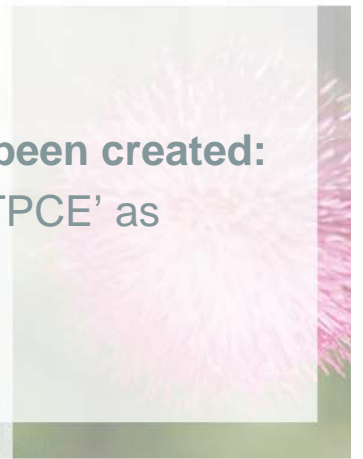
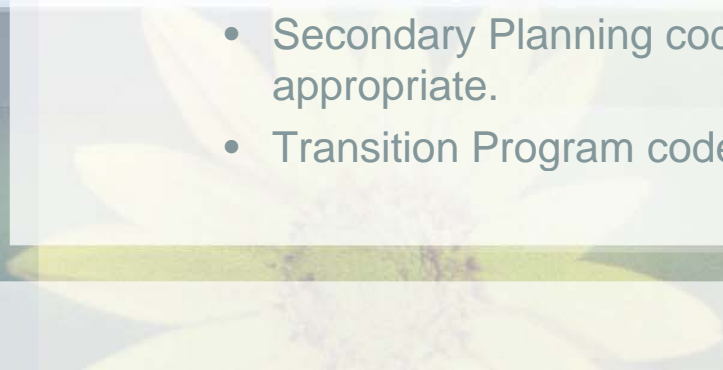
Operating Standards - 3301-51-07 (L)(2)(a)(i)

Reviews the child’s IEP periodically, but not less than annually, to determine whether the annual goals for the child are being achieved; and

ODE Clarifications



- **Secondary Planning – Transition Programs**
 - **Student age 14 or 15, has a transition statement in place, but not a formal transition plan:**
 - Secondary Planning code is ‘ **** ’
 - Transition Program code is ‘not checked’
 - **The student is age 14 or 15, and has neither a transition statement nor a formal transition plan:**
 - Secondary Planning code is ‘ **** ’
 - Transition Program code is ‘not checked’
 - **Student is 16 (or will have his sixteenth birthday during the effective date of the most recent IEP), but no formal plan containing post-secondary goals has been created:**
 - Secondary Planning code is ‘TPNP’
 - Transition Program code is ‘211105’
 - **Student is age 14 or above, and a formal plan has been created:**
 - Secondary Planning code is ‘TFYG’, ‘TMYG’, or ‘TPCE’ as appropriate.
 - Transition Program code is ‘211100’



ODE Clarifications



- **Transitional Services**

- Transitional Service ('215025') for person providing direct service to the student, with start/end dates and frequency (Goal Page, Service option)
- Transition Program Codes ('211100'/'211105') for indicating plan in place/not in place (Transition Page, Checkboxes)
- Secondary Planning ('TPNP', 'TFYG', 'TMYG', 'TPCE') for indicating which plan in place/not in place (Date Code, drop down list)

❖ **Note: EMIS FY10 eliminates '215025', '211100', '211105'**

ODE Clarifications



- **Speech Disability – Speech Services**
 - Students with a speech disability (EMIS code '05') CAN receive Speech services (EMIS code '215013').
 - BOTH can be reported for the student in EMIS.

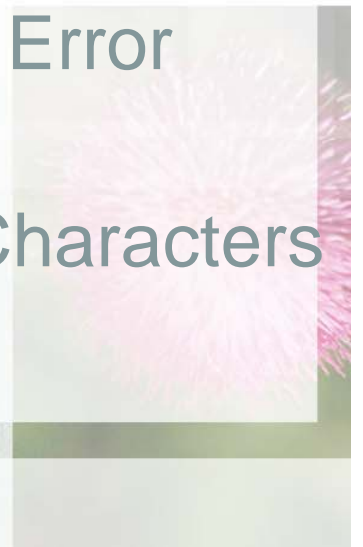
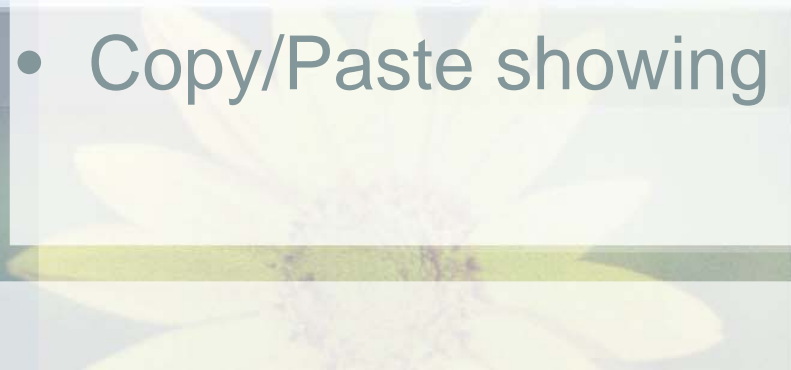
❖ ***Note: this is different that we previously communicated***

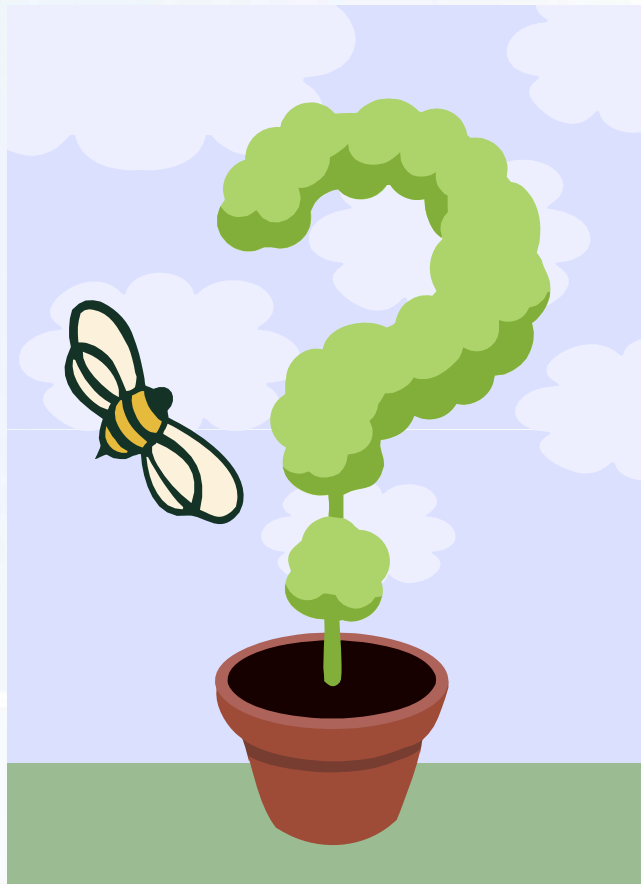


Known Bug List



- Test Date Year Calculation on EMIS Extract (5.1.2)
- Placeholder for Blank Services on EMIS DCF (5.1.2)
- Due Date Calculation on IEP Due Date Report (6.0)
- Disability Condition print from PR06P2 (6.0)
- Disability Start Date EMIS Extract Error (6.0)
- Copy/Paste showing new Funky Characters





Questions and Comments



Meeting Dates



- **June 10, 2009 – 1:30pm**
- **August 12, 2009 – 1:30pm**

