



# Reflection Configuration for LACA

## Download and Install Reflection

1. Go to <https://www.laca.org/reflectionweb.aspx> and click the link to [Install Reflection Desktop Version 8 for Windows](#).

2. Enter your LACA username and password.

The page or resource you are attempting to access requires you to log into your LACA account.

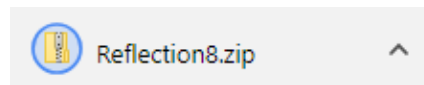
LACA Username:

Password:

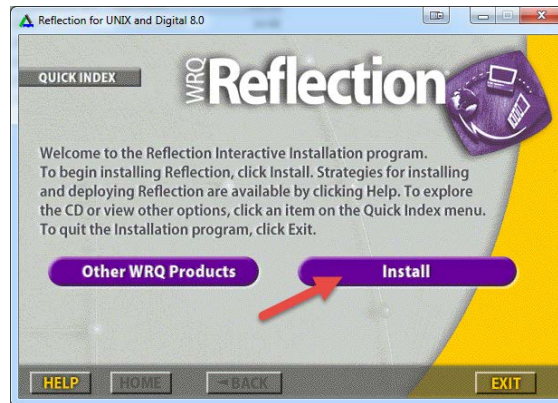
Login

[I have forgotten my LACA password](#)

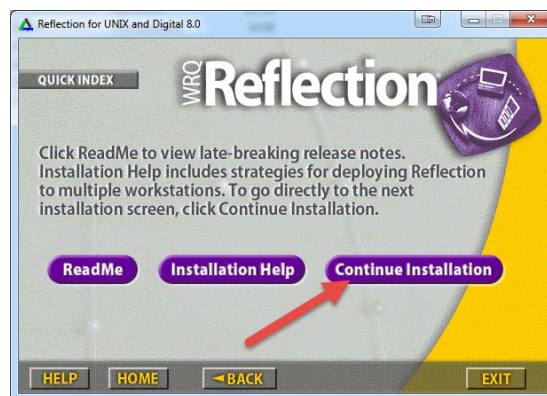
You should see Reflection 8.zip.  
Click open.



3. Run INSTALL.EXE and chose INSTALL.



4. Click "Continue Installation"

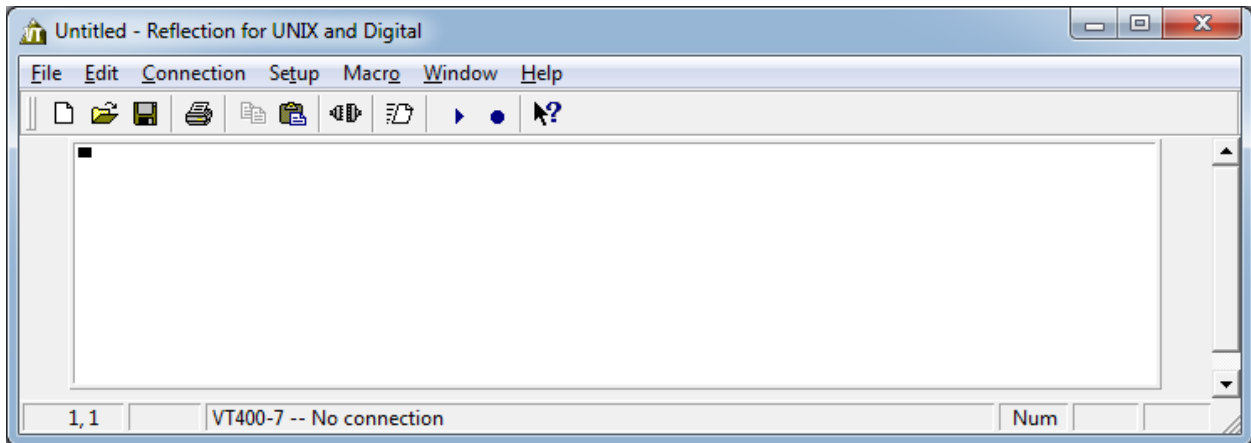


5. Choose "Workstation" installation, and take all defaults until finished.

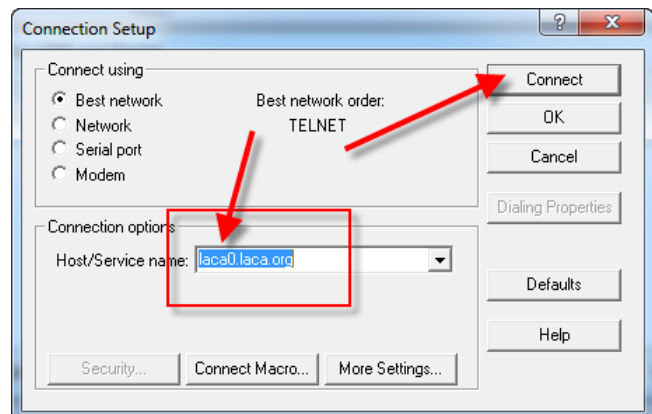


## Configure Reflection

1. Start Reflection from the start menu – You will end up with a blank "Untitled" window.

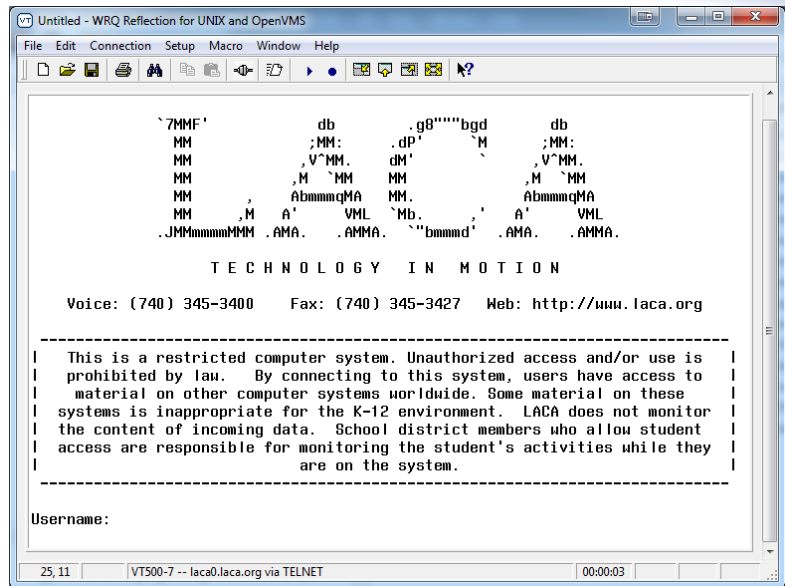


2. Go to **Connection...Connection Setup**. Enter LACA0.LACA.ORG as the host name, then click Connect.

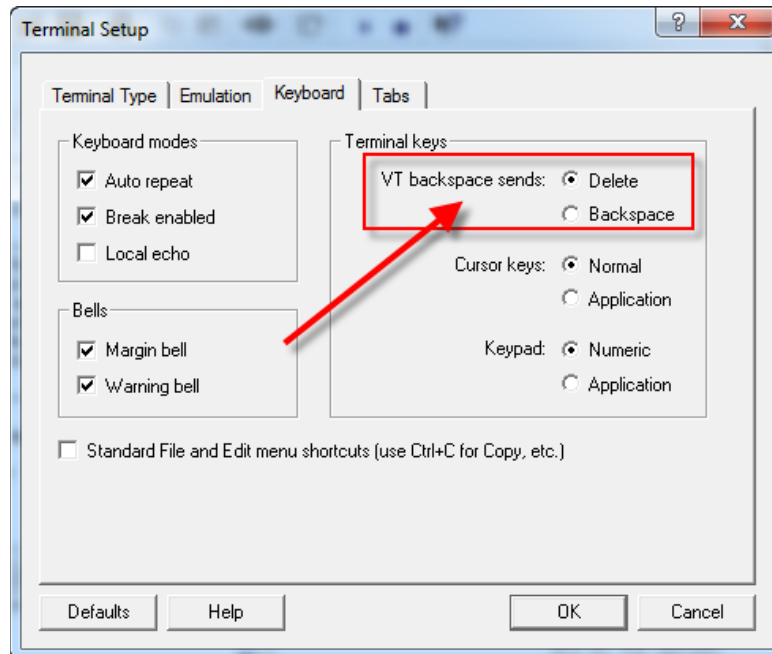




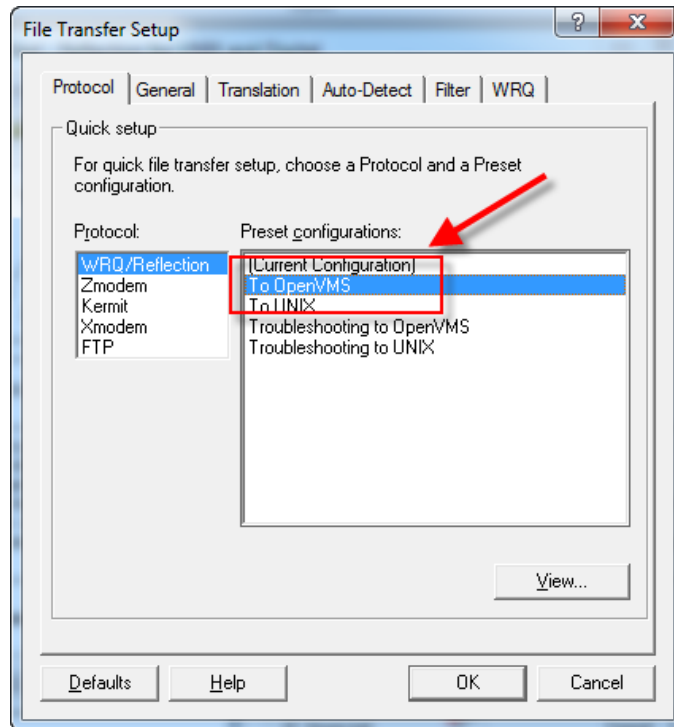
You should see the LACA Login screen at this point.



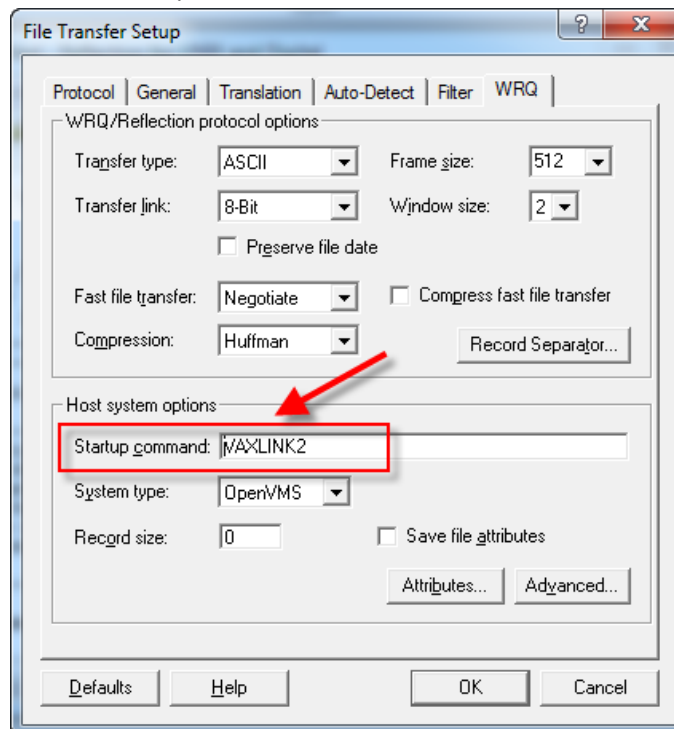
3. Go to **Setup...Terminal**. Under the “Keyboard” tab, change “VT Backspace sends:” to “DELETE”. Click OK.



- Go to **Setup...File Transfer**. Protocol should be “WRQ/Reflection”, and preset should be “To OpenVMS”. Then click the WRQ tab.



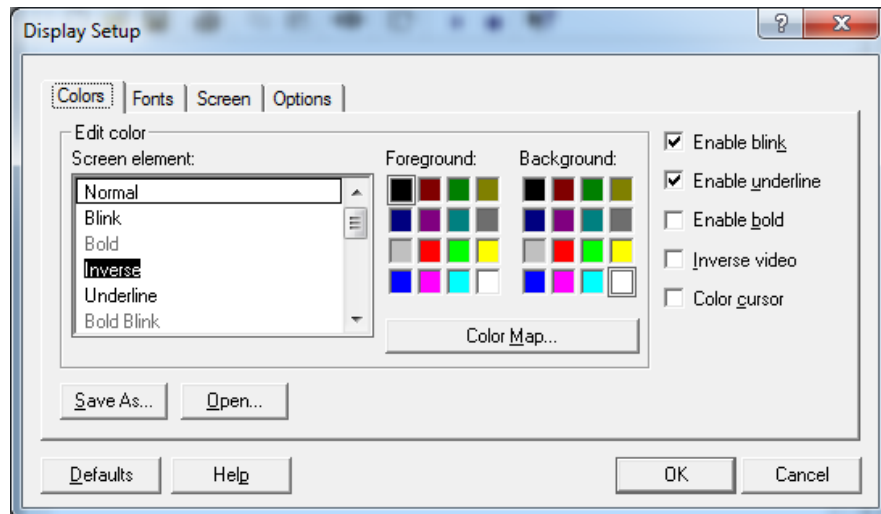
Under “Startup Command”, take off the “RUN” in front of VAXLINK2. Click OK.



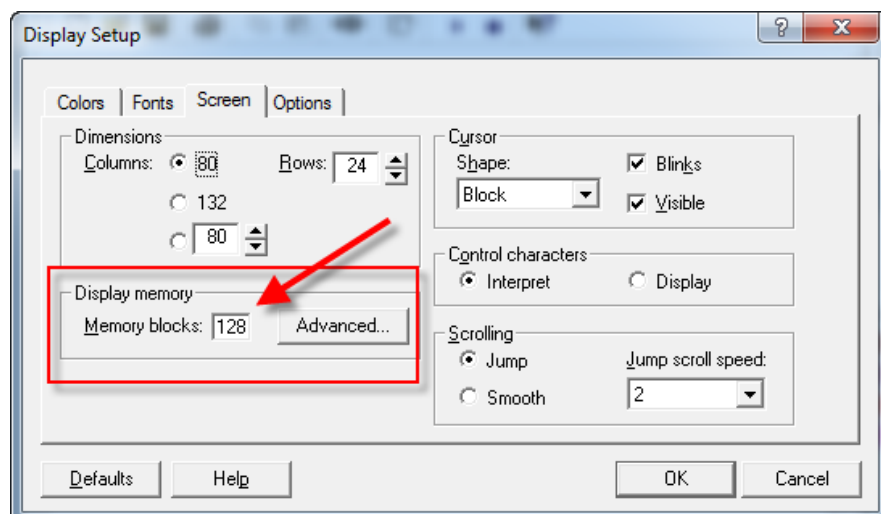
- Go to **File...Save**, and save the config file to the desktop (or a location of your choosing). Double-clicking the saved config file will start Reflection with the settings you just changed.

6. OPTIONAL: Go to **Setup...Display**

Change your foreground/background colors to something more appealing than black and white and click OK.



With Reflection, you can scroll your screen up to see what you have previously done throughout the day. While under Setup...Display, click the “Screen” tab. Change “Memory Blocks” from the default of 9 to 128. The higher the number, the farther back in time you can go in the scrollbar. 128 is the MAXIMUM Reflection will let you set.



That completes the setup of Reflection for use with the USAS/USPS system.